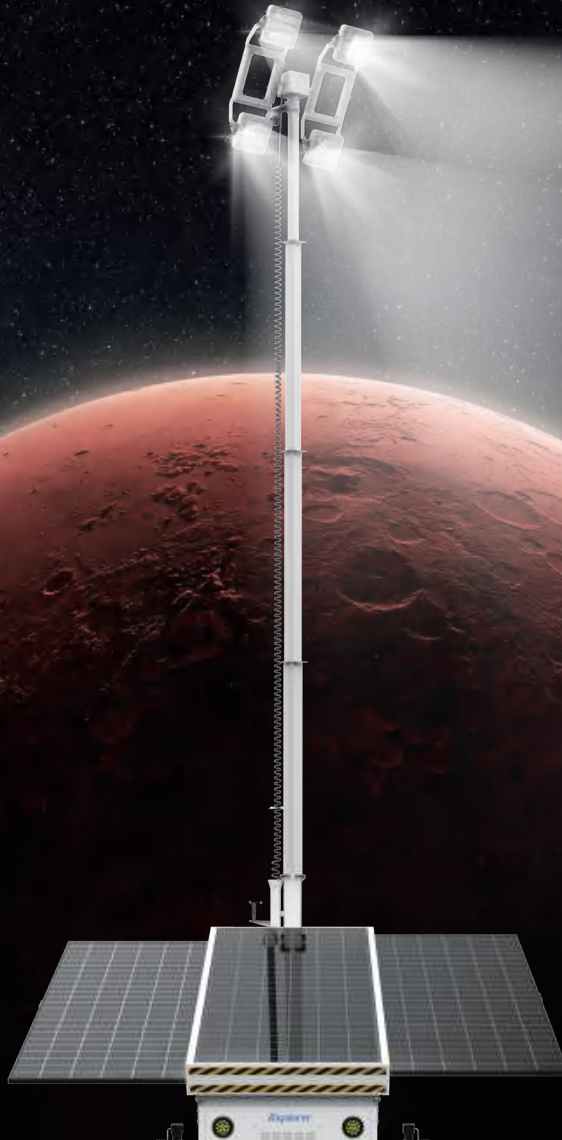




LUXMAN



EXPLORER

MULTI-PURPOSE
MOBILE SOLAR LIGHTING TOWER



PRODUCT INTRODUCTION

The Explorer Mobile Solar Lighting Tower uses high-efficiency LED lamps, with high brightness and long lifespan, designed to provide emergency lighting for outdoor large construction projects. It can work normally in various harsh environments and climatic conditions.

This equipment consists mainly of solar panels, batteries, pan/tilt system, control system, LED luminaires, camera, trailer, electric mast etc.

The equipment has comprehensive functions, which aren't currently seen on the market, such as wind speed detection, infrared distance control of mast, camera monitoring, PC remote control, 20-hour uninterrupted operation of LED luminaires, 5G base station and air detection device are available if needed.

It can also serve as a large mobile power station.



9 hours of charging and 24 hours of use



Scalable solar panel



360° Rotation



Extendable and Retractable Mast



Emergency lighting



Smart camera



High performance

APPLICATIONS

Constructions: urban pipeline, road construction and maintenance

Emergencies: earthquake, fire, flood

War-related events: rescue, exercise, camping

Mining sites: tunnel, storage and transportation, distribution

Sports events, film shooting, airports, railroads

Transportation, utilities, water pipes, gas, telecommunication construction



LARGE CONSTRUCTION PROJECTS



MINING OPERATIONS



MAINTENANCE & REPAIR



FLOOD PREVENTION & RESCUE



ACCIDENT HANDLING



DISASTER RELIEF

PRODUCT OVERVIEW

A wide range of applications
Solar power generation
Battery storage
4G remote monitoring
LED luminaires
Remote control, LCD and PC control
Zero pollution, Zero emissions
Unattended



Solar energy



Extendable and Retractable Mast



360° Rotation



Intelligent control



Smart camera



Extendable and Retractable Mast



Foldable solar panel



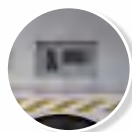
Real-time turn signal



Four support legs



Control panel



Extensible interface





LED Floodlight

IK08 impact protection, IP65
ingress protection,
up to 165 lm/W.

Manual or automatic
adjustment,
360° horizontally
rotatable and $\pm 90^\circ$ tiltable



TOWING THE TRAILER TO THE JOB SITE



REAL-TIME MONITORING

The background image shows a desert landscape at dusk or dawn. On the left, a solar-powered lighting system is mounted on a trailer with two solar panels. A tall, adjustable mast rises from the trailer, supporting a cluster of bright LED lights that are illuminated. In the center, a tall, lattice-structured tower supports a three-bladed wind turbine. To the right of the tower, there is a small, dark, rectangular control cabinet or battery pack. The sky is a mix of orange and dark green, suggesting a sunset or sunrise over a vast, flat plain.

FEATURES

Switches, LCD, Keys are integrated on the control panel, allowing for easy operation.

Mast height can be electrically adjusted between 3 to 12 meters, infrared automatic positioning.

High-performance LED luminaires, up to 165 lm/W, providing a wide light coverage area.

4G smart camera can provide real-time monitoring, anti-theft, detection, and intercom.

The equipment comes with wind speed detection, and automatically alarms for typhoons exceeding level 8.

The output voltage of the inverter is 220V, maximum 3kW.

Fully charged in 8 hours, the equipment can work for more than 20 hours.

A 5G base station can be installed to boost 5G signal in areas with low signal coverage. Air quality detection is optional.

Solar panels can be folded to save space.

Zero pollution, Zero emissions.

The equipment can be left unattended.

FEATURES

Lighting System:	4*50W LED Floodlights
Light Output:	33000 lm
Control:	Manual / Remote Control / PC
IP Rating:	IP65
Solar Panel Type:	Monocrystalline Silicon, 21.4% efficiency
Solar Panel Wattage:	2*460W
PV Controller:	MPPT 40A, 95% efficiency
Battery Type:	Lead-acid
Battery Pack:	4*200AH DC 12V
Battery Capacity:	9.6 kW-h
Surveillance:	4G security camera
System Voltage:	DC 24V
Mast Height:	2.5-6 Meters
Lifting System:	Manual / Electric
Wind Resistance Rating:	Level 8, 117 KM/H
Axle:	Single
Tire and Rim:	2*14-inch pneumatic tires
Stabilizer:	4 support legs, wind-down
Trailer Coupler:	Suitable for ø50mm trailer ball
Working Temperature:	-35°C- 60°C
Charging Time:	8 hours
Running Time:	28.8 hours
Battery Charging:	Solar / Mains
Transport Dimensions:	1500*1650*2500 mm
Deployed Dimensions:	2850*2200*6000 mm
Gross Weight :	1200 KG
Container Loading:	20 GP: 8 pcs, 40 GP: 16 pcs



LX600-09-6M



LED Luminaire: 165 lm/W
 Mast System: electric or manual lifting
 Easy Control: Manual / Remote Control /PC
 Mobility: trailer-mounted
 Running Time: 8 hours of charging, 20 hours of use
 Flexible Configuration: 5G base station & security camera are optional.



LX600-09-9M



Solar power generation, noise-free.
 Powerful LED luminaires.
 High-efficiency solar panels.
 Durable and reliable gel battery, can be charged with mains electricity as well.
 AC output outlets available for supplying power to various needs.
 Sturdy construction.
 Luminaires can be 360° horizontally rotated and 90° tilted.

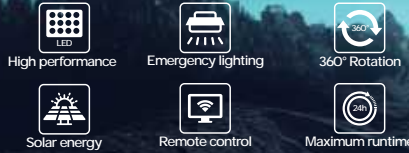


FEATURES

Lighting System:	4*100W LED Floodlights
Light Output:	66000 lm
Control:	Manual / Remote Control / PC
IP Rating:	P65
Solar Panel Type:	Monocrystalline Silicon, 21.7% efficiency
Solar Panel Wattage:	3*550W
PV Controller:	MPPT 40A,95%
Battery Type:	Lead-acid
Battery Pack:	6*200AH DC12V
Battery Capacity:	14.4 kW·h
Surveillance:	4G security camera
System Voltage:	DC 48V
Mast Height:	2.5 - 9 Meters
Lifting System:	Manual / Electric
Wind Resistance Rating:	Level 8, 117 KM/H
Axle:	Single
Tire and Rim:	2*15-inch pneumatic tires
Stabilizer:	4 support legs, wind-down
Trailer Coupler:	Suitable for ø50mm trailer ball
Working Temperature:	35°C-60°C
Charging Time:	8 hours
Running Time:	20 hours
Battery Charging:	Solar / Mains
Transport Dimensions:	3300*1650*2500 mm
Deployed Dimensions:	3300*3300*9000 mm
Gross Weight :	1500 KG
Container Loading:	20 GP: 2 pcs, 40 GP: 5 pcs



LX600-09-12M



The Mobile Solar Lighting Tower mainly consists of solar panels, batteries, LED luminaires, controllers, and chassis.

Solar panels convert sunlight into electricity, which is stored in the batteries.

LED luminaires use high brightness LED lamps with high efficacy and long lifespan.

The controllers are intelligent, which can automatically control functions such as charging, discharging, and lighting, improving the efficiency and safety of the equipment.

The chassis is made of lightweight materials, sturdily constructed, and easily movable.



FEATURES

Lighting System:	6*200W LED Floodlights
Light Output:	198000 [m
Control:	Manual / Remote Control / PC
IP Rating:	IP65
Solar Panel Type:	Monocrystalline Silicon, 21.4%% efficiency
Solar Panel Wattage:	6*460W
PV Controller:	MPPT 60A, 95%
Battery Type:	Lead-acid
Battery Pack:	12*200AH DC12V
Battery Capacity:	28.8 kw·h
Surveillance:	4G security camera
System Voltage:	DC 48V
Mast Height:	3- 12 Meters
Lifting System:	Manual / Electric
Wind Resistance Rating:	Level 8, 117 KM/H
Axle:	Dual
Tire and Rim:	4*15-inch pneumatic tires
Stabilizer:	4 support legs, wind-down
Trailer Coupler:	Suitable for ø50mm trailer ball
Working Temperature:	35°C- 60°C
Charging Time:	8 hours
Running Time:	21 hours
Battery Charging:	Solar / Mains
Transport Dimensions:	3700*2300*2500 mm
Deployed Dimensions:	4700*6500*12000 mm
Gross Weight :	2800 KG
Container Loading:	20GP: 2 pcs, 40 GP: 4 pcs

SOLAR-POWERED MOBILE POWER SUPPLY VEHICLE

The Mobile Power Supply Vehicle (MPSV) uses solar panels to convert sunlight into electricity, consisting mainly of solar panels, controllers, batteries and inverters.

Real-time data can be monitored, saved, and controlled.

The MPSV is ideal for use in construction sites, mining operations, maintenance & repair, accident handling and emergency & rescue etc. It can recharge itself with solar panels, and supply electricity on-demand at job sites.



FEATURES

Output Voltage:	110/240 V
Frequency:	50/60 Hz
Battery Capacity:	19 kW·h
Solar Panel Type:	Monocrystalline Silicon, 21.4% efficiency
Solar Panel Wattage:	4*460 W
PV Controller:	MPPT 60 A, 95%
Battery Type:	Lead-acid
Battery Pack:	8*200 AH DC 12 V
Communication Interface:	RS-485
Output Port :	1*10A AC outlet + 2 *4A AC outlets + 1 *5V USB
Axle:	Single
Tire and Rim :	2*15-inch pneumatic tires
Stabilizer :	4 support legs, wind-down
Trailer Coupler :	Suitable for ø50mm trailer ball
Working Temperature :	-35°C - 60°C
Charging Time :	8 hours
Running Time :	7.6 hours with 2 kW load, 19.2 hours with 0.8 kW load
Battery Charging :	Solar / Mains
Transport Dimensions :	3350*2400*2050 mm
Deployed Dimensions :	3500*2400*3600 mm
Gross Weight :	2100 KG



LX100-08-28



Solar energy



Emergency electricity



Intelligence



Multiple voltages



FEATURES

Output Voltage:	110/240 V
Frequency:	50/60 Hz
Battery Capacity:	28 kW-h
Solar Panel Type:	Monocrystalline Silicon, 21.4% efficiency
Solar Panel Wattage:	6*460 W
PV Controller:	MPPT 80 A, 95%
Battery Type:	Lead-acid
Battery Pack:	12*200 AH DC 12 V
Communication Interface:	RS-485
Output Port:	1*18A AC outlet + 2 *5A AC outlets + 1 *5V USB
Axle:	Single
Tire and Rim:	2*15-inch pneumatic tires
Stabilizer:	4 support legs, wind-down
Trailer Coupler:	Suitable for ø50mm trailer ball
Working Temperature:	-35°C - 60°C
Charging Time:	8 hours
Running Time:	11.5 hours with 2 kW load, 28.8 hours with 0.8 kW load
Battery Charging:	Solar / Mains
Transport Dimensions:	3350*2400*2150 mm
Deployed Dimensions:	5100*4700*3600 mm
Gross Weight :	2500 KG

LX100-08-43



Solar energy



Emergency electricity



Intelligence



Multiple voltages



FEATURES

Output Voltage:	110/240 V
Frequency:	50/60 Hz
Battery Capacity:	48 kW-h
Solar Panel Type:	Monocrystalline Silicon, 21.4% efficiency
Solar Panel Wattage:	8*460 W
PV Controller:	MPPT 80 A, 95%
Battery Type:	Lead-acid
Battery Pack:	20*200 AH DC 12 V
Communication Interface:	RS-485
Output Port:	1*25A AC outlet + 2 *10A AC outlets + 1 *5V USB
Axle:	Dual
Tire and Rim:	4*15-inch pneumatic tires
Stabilizer:	4 support legs, wind-down
Trailer Coupler:	Suitable for ø50mm trailer ball
Working Temperature:	-35°C - 60°C
Charging Time:	8 hours
Running Time:	17.2 hours with 2 kW load, 43.2 hours with 0.8 kW load
Battery Charging:	Solar / Mains
Transport Dimensions:	3350*2400*2150 mm
Deployed Dimensions:	5100*4700*3600 mm
Gross Weight :	3000 KG

☎ **+86 132 4661 0420**

Shenzhen Luxman Light CO.,LTD.

Address: #C Building, Baitong Industry Area, Shajing, Baoan, Shenzhen, China.

Email: meg@luxmanlight.com

Tel: +86(0)755-33089318

Fax: +86(0)755-33009010

www.luxmanlight.com